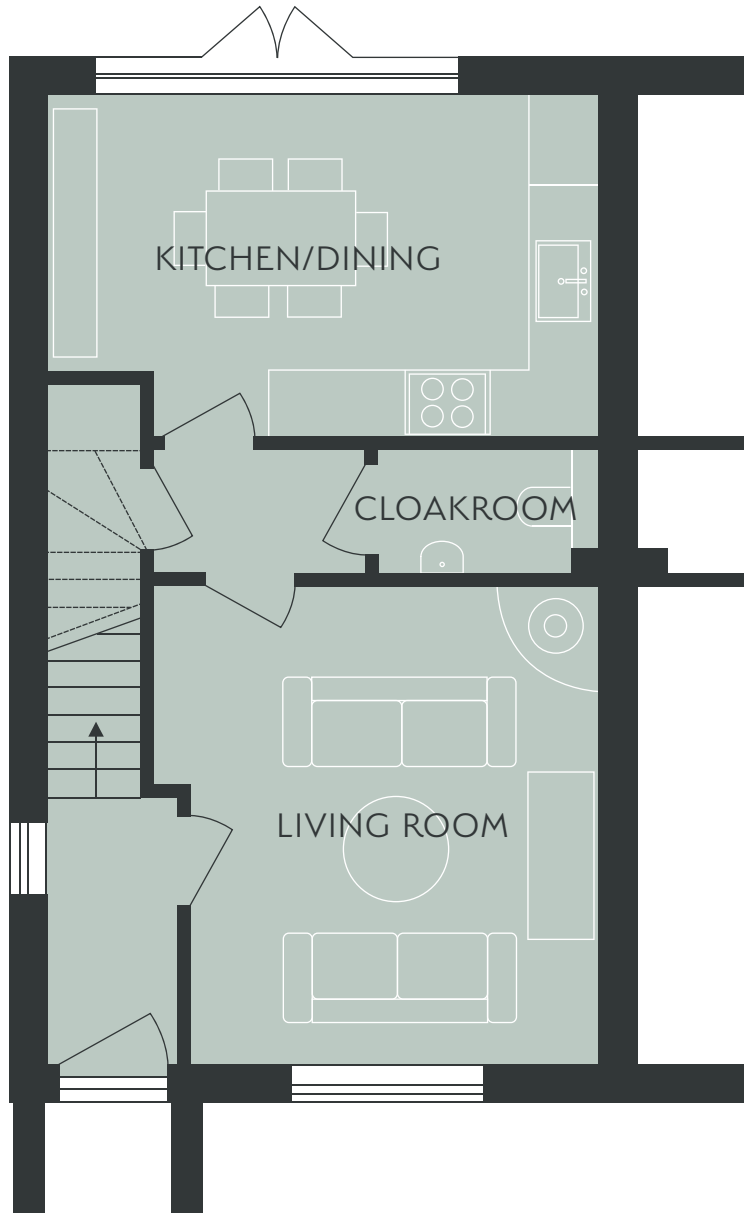


# YARROW COTTAGE - PLOT 16

2 BEDROOM SEMI-DETACHED HOME - TOTAL: 93 SQ.M / 1001 SQ.FT

## GROUND FLOOR



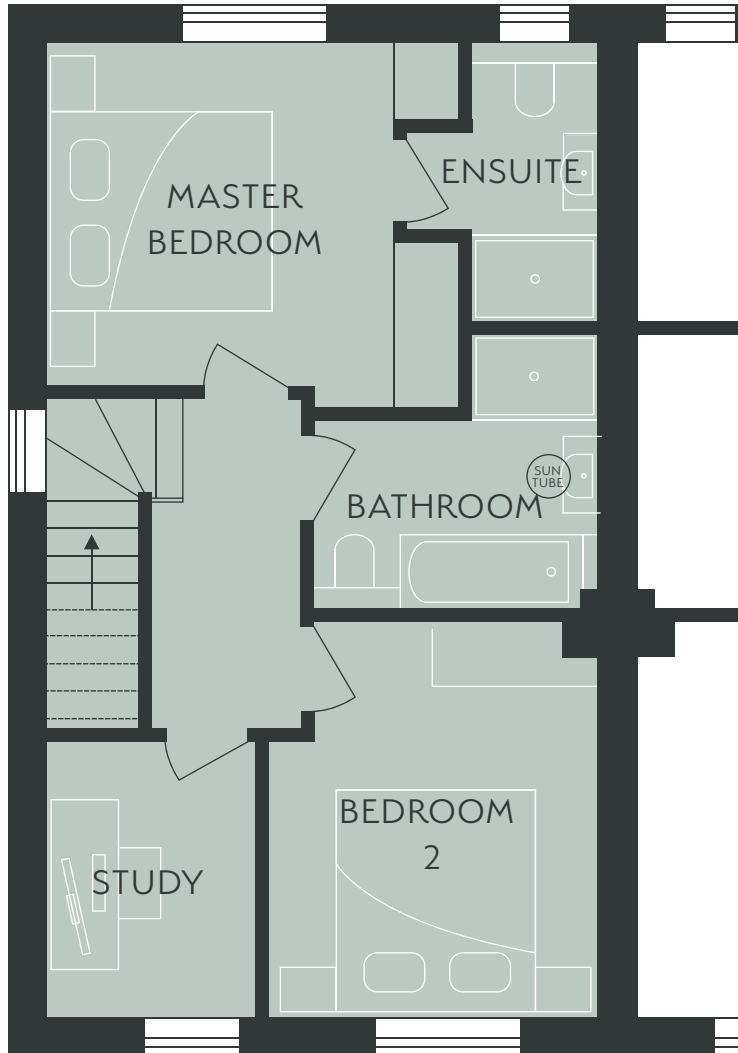
YARROW COTTAGE	mm	ft/in
Kitchen/Dining	5167 x 3227	16'11" x 10"7
Living Room	4489 x 3824	14'9" x 12"6"
Cloakroom	2090 x 1200	6'10" x 3'11"

Approximate Dimensions. All dimensions are maximum.

# YARROW COTTAGE - PLOT 16

2 BEDROOM SEMI-DETACHED HOME - TOTAL: 93 SQ.M / 1001 SQ.FT

## FIRST FLOOR



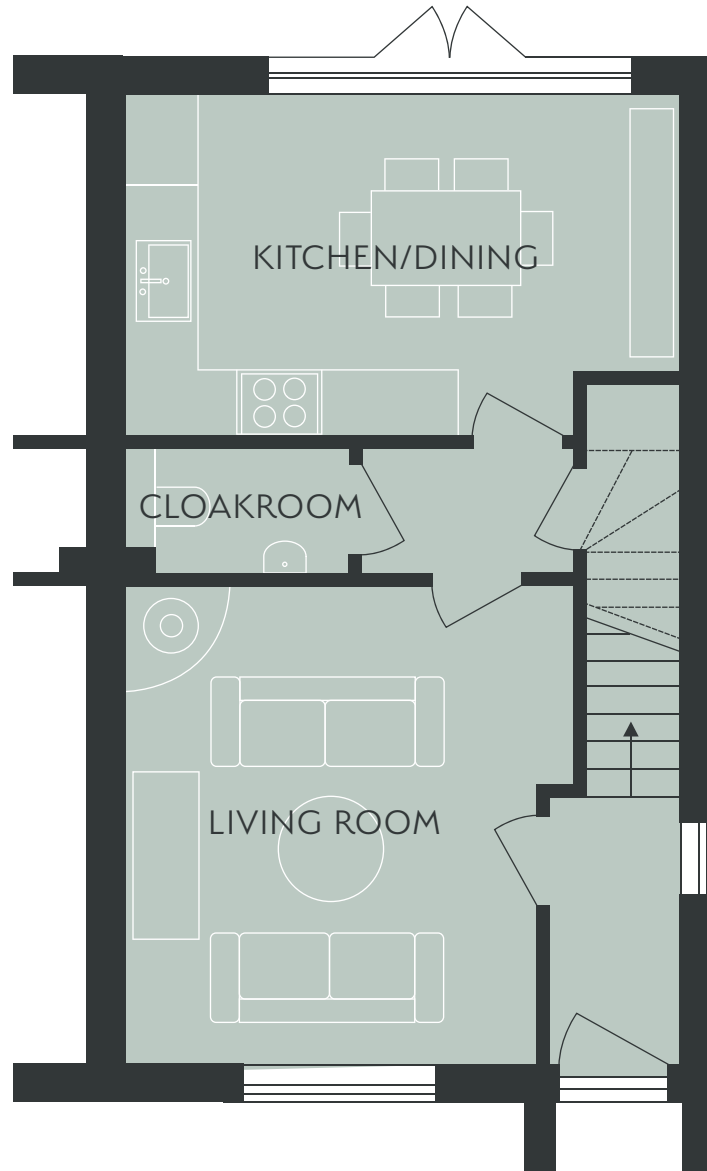
YARROW COTTAGE	mm	ft/in
Master Bedroom	3254 x 3227	10"8' x 10'7'
Ensuite	2627 x 1229	8"7' x 4'0'
Bedroom 2	3584 x 3103	11'9' x 10"2'
Study	2601 x 1965	8"6' x 6"5'
Bathroom	2690 x 2684	8"9' x 8"9'

Approximate Dimensions. All dimensions are maximum.

# ORCHID COTTAGE - PLOT 17

3 BEDROOM SEMI-DETACHED HOME - TOTAL: 120 SQ.M / 1291 SQ.FT

## GROUND FLOOR



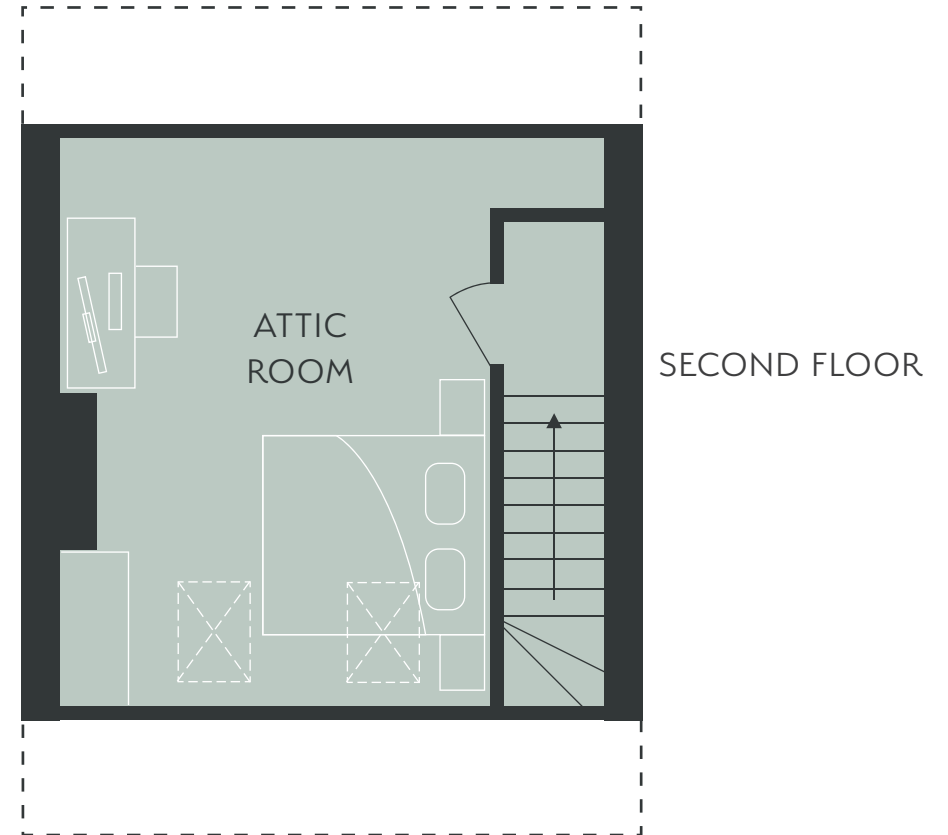
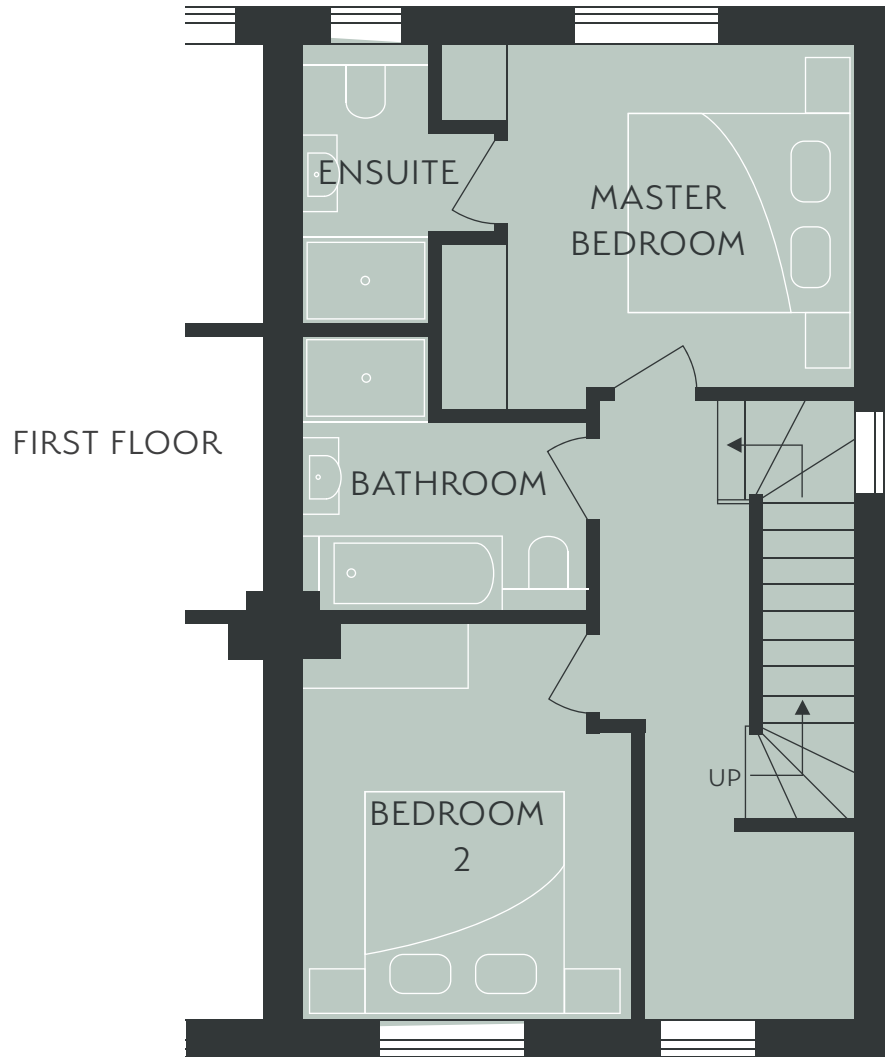
	mm	ft/in
Kitchen/Dining	5167 x 3227	16'11" x 10"7"
Living Room	4489 x 3824	14'9" x 12"6"
Cloakroom	2090 x 1200	6'10" x 3'11"

Approximate Dimensions. All dimensions are maximum.

# ORCHID COTTAGE - PLOT 17

3 BEDROOM SEMI-DETACHED HOME - TOTAL: 120 SQ.M / 1291 SQ.FT

## FIRST & SECOND FLOOR



FIRST FLOOR	mm	ft/in
Master Bedroom	3254 x 3227	10'8" x 10'7"
Ensuite	2627 x 1229	8'7" x 4'0"
Bedroom 2	3584 x 3103	11'9" x 10'2"
Bathroom	2690 x 2684	8'9" x 8'9"

SECOND FLOOR	mm	ft/in
Attic Room	5470 x 4020	17'11" x 13'3"

Approximate Dimensions. All dimensions are maximum.